

Courses and distances in perches and tenths.

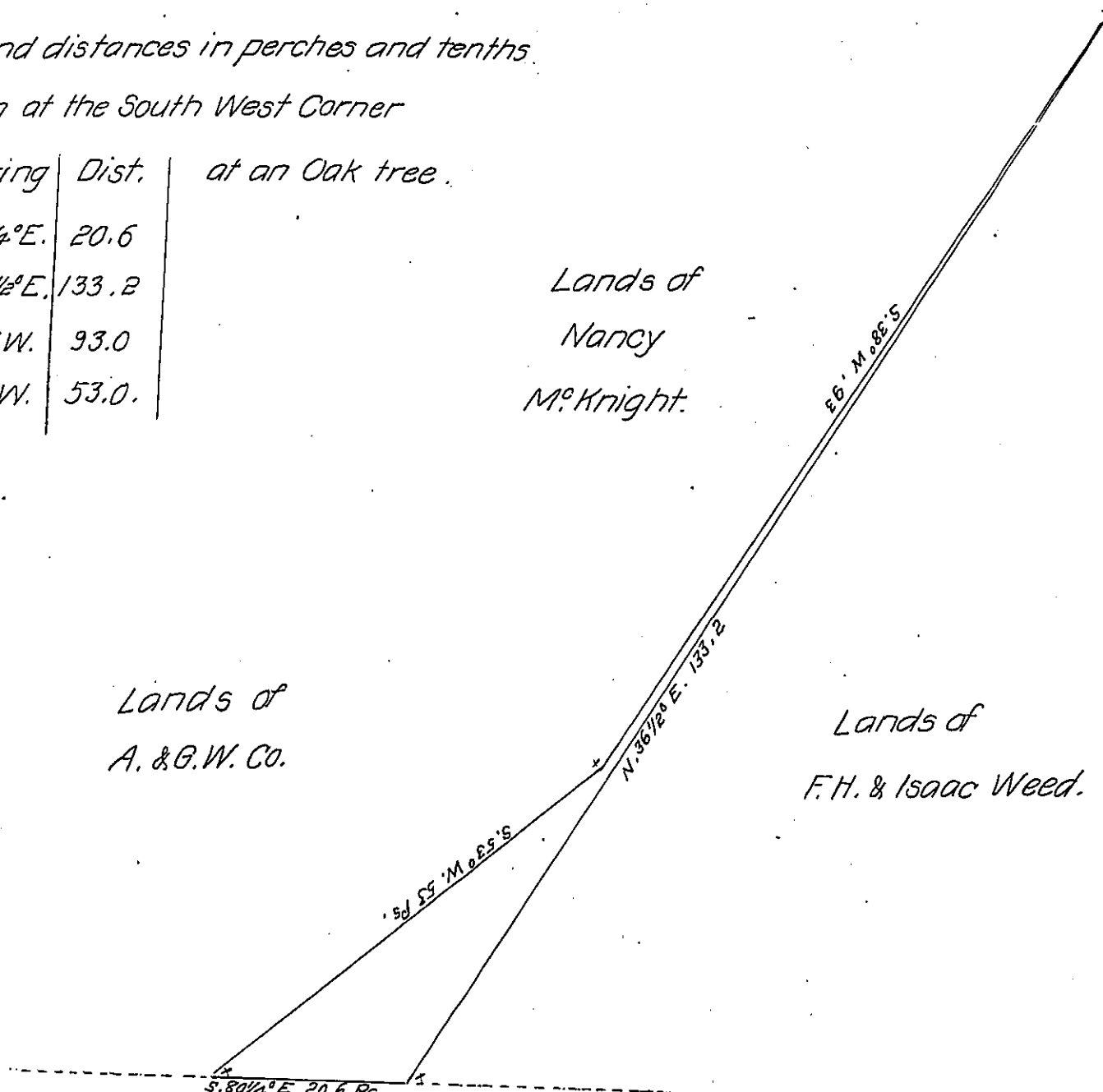
Beginning at the South West Corner

Stat.	Bearing	Dist.	at an Oak tree.
1 <sup>st</sup>	S. 84 1/4° E.	20.6	
2 <sup>d</sup>	N. 36 1/2° E.	133.2	
3 <sup>d</sup>	S. 38° W.	93.0	
4 <sup>th</sup>	S. 53° W.	53.0	

Lands of  
Nancy  
Mc Knight.

Lands of  
A. & G. W. Co.

Lands of  
F. H. & Isaac Weed.



By Virtue of a Warrant dated the 7<sup>th</sup> day of April A.D. 1868, Surveyed the 14<sup>th</sup> day of April A.D. 1868, for Isaac Weed, the above described piece or tract of Land. Situate in Oil Creek township in the County of Crawford Containing three Acres and thirty six perches and Allowance of Six per Cent &c.

To the Hon. J.M. Campbell  
Surveyor General.

James Tryon

I, T.W. White, County Surveyor in and for the County of Crawford, do hereby Certify that the above is a true and Correct Survey.

T.W. White } County Surveyor.

IN TESTIMONY that the above is a copy of the original remaining on file in the Department of Internal Affairs of Pennsylvania, made conformably to an Act of Assembly approved the 16th day of February, 1833, I have hereunto set my Hand and caused the Seal of said Department to be affixed at Harrisburg, this Ninth day of July 1907

*Henry Howell*  
Secretary of Internal Affairs.